





Suicide Prevention Resource Center

Promoting a public health approach to suicide prevention



The nation's only federally supported resource center devoted to advancing the *National Strategy for Suicide Prevention*.

Technical Orientation Slide

- ✓ If you are having any technical problems joining the webinar please call Adobe Connect at 800-422-3623.
- ✓ Type any questions or comments at anytime into the chat box and we will attempt to assist you.
- ✓ You can also make the presentation screen larger at any time by clicking on the “Full Screen”  button in the upper right hand side of the slide presentation. If you click on  again it will return to normal view.
- ✓ To mute or unmute your line, press *#

SPRC Tribal Surveillance Project



Doreen M. Bird, MPH
Santo Domingo Pueblo



Melissa Adolfson, MS



Sina Ikikcu Win (Takes the Robe
Woman)

Ethleen Iron Cloud-Two Dogs,
M.S., Oglala Lakota

OPENING

"Life.... It is the flash of a firefly in the night, the breath of a buffalo in the winter. It is the little shadow, which runs across the grass, and loses itself in the sunset...."

Crowfoot - Blackfeet Elder



Introduction

- ✓ This webinar will describe the rationale for developing a tribal suicide surveillance project
- ✓ Methods used for this inquiry
- ✓ Preliminary findings from our key informant interviews.
- ✓ Cultural considerations of tribal suicide surveillance



Why a tribal surveillance project?

- ✓ Current interest in suicide surveillance warrants an in-depth study
- ✓ Different tribal customs, values, and taboos make suicide data collection a sensitive topic
- ✓ Funding requirements and cultural consideration can work together in creating surveillance systems that work for each community



Relevant SAMHSA Priority

SAMHSA is requiring all Garrett Lee Smith grantees to demonstrate the **impact** of their 5-year project in **reducing youth suicide deaths and/or attempts.**



Context

Many Native people instill their core cultural, spiritual activities and rituals throughout daily life. Tribal values were never something independent from everyday routines.



The most effective evaluation approaches involve integrating cultural perspectives and elements across the entire spectrum of your program

SPRC Tribal Surveillance Project

This project will explore and identify resources, strategies, and success stories Tribal communities can use to develop suicide monitoring and surveillance systems that can demonstrate the impact of their projects.



Methods

- ✓ **Literature Review**- PubMed search
key terms: tribal, Native American, American Indian, Alaska Native, suicide, suicidal, surveillance, monitoring, data collection, evaluation; no publication year limit; included relevant articles from Canada, Australia, New Zealand
- ✓ ****Key Informant Interviews**
N= 21 interviews 28 individuals
- ✓ **Quantitative Survey**
(forthcoming in September)



Have you seen... any examples of, or been involved in developing or maintaining, **successful** tribal surveillance systems? **If yes**, can you **describe** the elements that made it successful?



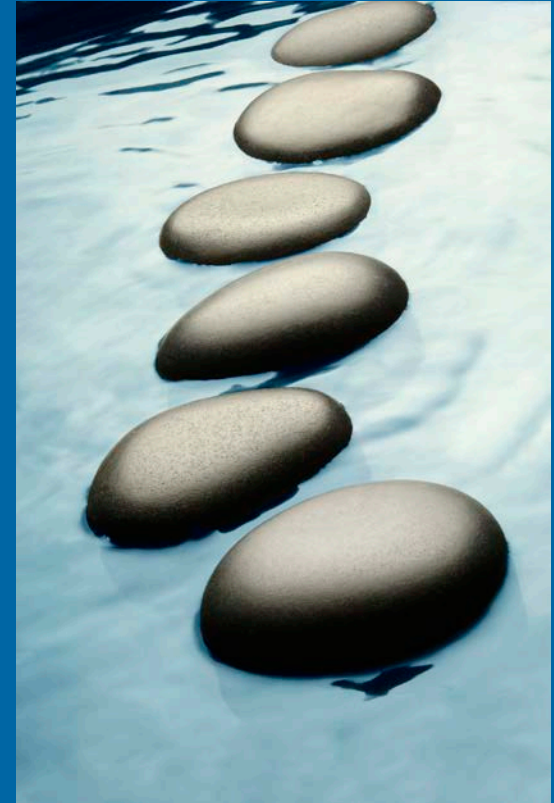
Preliminary Findings....

General Challenges

- ✓ No one-size-fits-all approach
- ✓ Serving multiple sovereign nations
- ✓ Counting infrequent events
- ✓ Maintaining confidentiality
- ✓ Lack of infrastructure

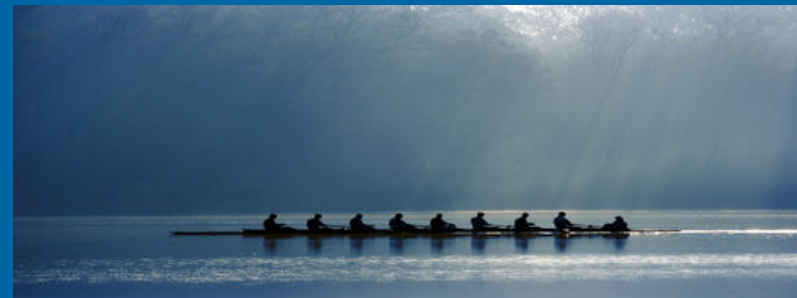
General Wisdom

- ✓ Keep it simple!
- ✓ Pilot test surveillance efforts before taking to scale
- ✓ Start with basic forms and simple databases
- ✓ Collect only as much information as you need



Surveillance Strategy: Case Study 1

- ✓ Adapted the CDC's Self-Directed Violence Surveillance tool
- ✓ Trained crisis response teams
- ✓ Collaborated with key partners to further populate the surveillance form
- ✓ Maintain a simple, secure database to enter data and track follow-up services



Surveillance Strategy: Case Study 2

- ✓ Work with tribal hospital/clinic electronic health records
- ✓ Develop MOUs with other area
- ✓ Compile and cross-reference data from all sources
- ✓ Monitor risk, and flag records in cases where there hasn't been follow-up

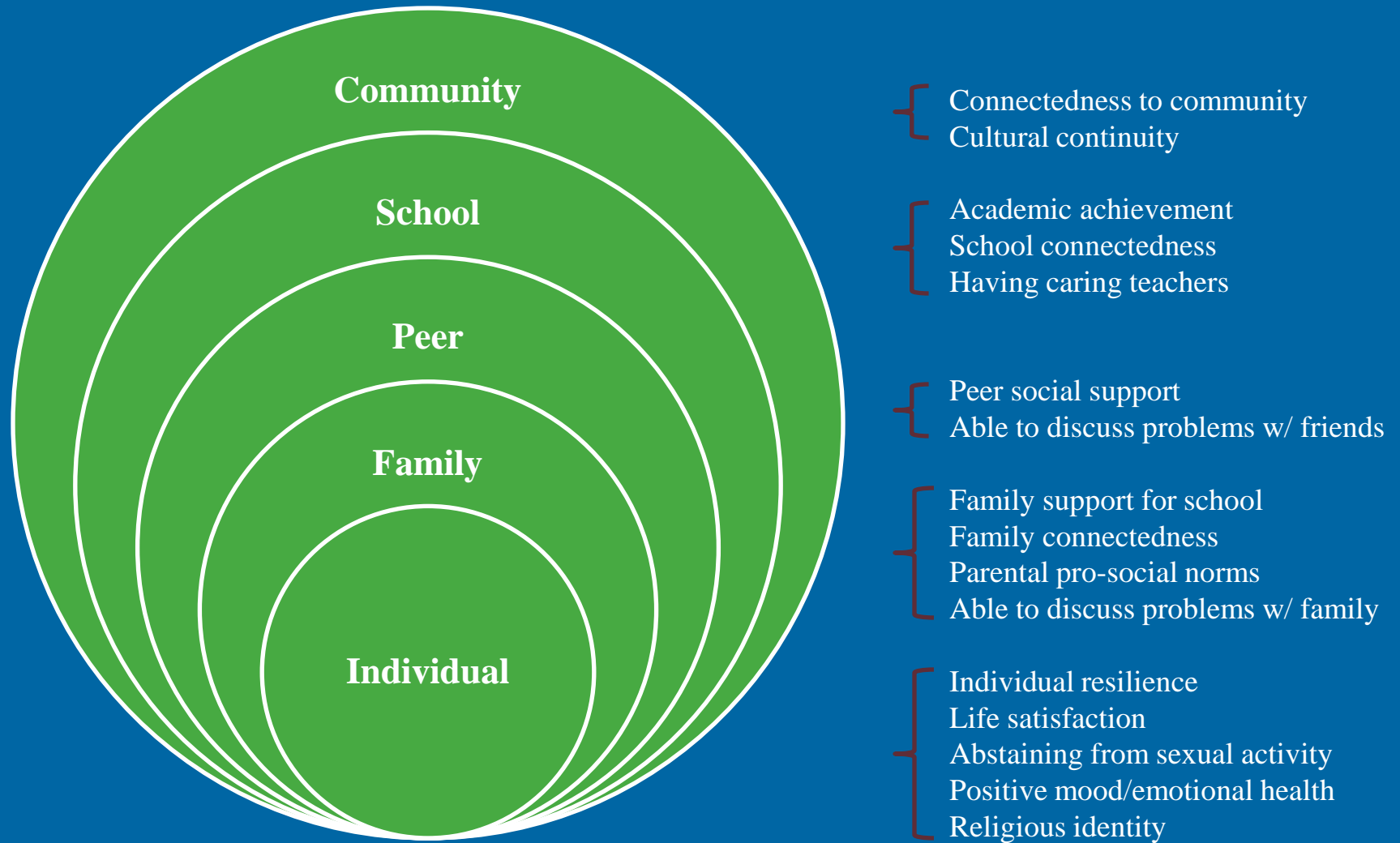
Important Risk Factors

- ✓ Family/friend history
- ✓ Mental illness
- ✓ Substance use
- ✓ Adverse childhood experiences
- ✓ Domestic violence
- ✓ Family conflict/disruption

Important Protective Factors

- ✓ Family and community support
- ✓ Cultural identity
- ✓ Coping skills
- ✓ School connectedness
- ✓ People knowing where/how to access support/services
- ✓ Behavior change resulting from prevention training

Protective Factors for Suicide Attempts



Mackin et al, 2012. The Power of Protection

Poll

Which protective factors do you track as part of your surveillance efforts?

Tribal Epi Center Supports

- ✓ House and analyze data on behalf of tribes
- ✓ Help to access data from state-level databases and registries
- ✓ Help to improve statewide data collection efforts to increase samples sizes for tribal communities
- ✓ Develop reports, presentations, profiles, and infographics w/ input from tribes


Surveillance Success Stories:

White Mountain Apache:

<http://www.sprc.org/news/white-mountain-apache-tribe-surveillance-success-story>

Fort Peck Indian Reservation:

http://www.sprc.org/sites/default/files/resource-program/Fort_Peck_Surveillance_Success_Story.pdf



Cultural Considerations Tribal Suicide Surveillance

Ethleen Iron Cloud-Two Dogs
Tribal Senior Prevention Specialist
Suicide Prevention Resource Center

Relationship Focus

Acculturation:

- Ask questions first
- Fill out forms
- Individual focus
- Impersonal
- “Get” information

Enculturation

- Relationship building
- Reciprocity
- Comfort and care
- Focus on family not just individual

Time and Space

- Deliberate and sensitive — e.g., scheduling
- Setting for the surveillance information to be collected

Power of Words

- Acknowledging the “dark spirit”, e.g., can be considered an invitation for it to return
- Speaking the name of someone who has passed may be taboo among some Tribes
- Talking about a person who has passed may be considered disrespectful

Information Sharing

- **Ownership** – Tribal sovereignty
- Who will see the information?
- **Concern** – identifiable information
- What will be done with the surveillance information?

Funding



SPRC funded by the U.S. Department of Health and Human Service's Substance Abuse and Mental Health Services Administration (SAMHSA) under grant no.5U79SM059945-02

SPRC is a project of EDC

Contact Us



EDC Headquarters

43 Foundry Avenue
Waltham, MA 02453

EDC Washington DC

1025 Thomas Jefferson Street, NW
Suite 700
Washington, DC 20007

edc.org

Resources

- ✓ WHO manual for establishing and maintaining surveillance systems for suicide and self harm: http://www.who.int/mental_health/suicide-prevention/attempts_surveillance_systems/en/
- ✓ CDC Self-Directed Violence Surveillance: <http://www.cdc.gov/violenceprevention/pdf/self-directed-violence-a.pdf>
- ✓ CDC Updated Guidelines for Evaluating Public Health Surveillance Systems: <https://www.cdc.gov/mmwr/preview/mmwrhtml/rr5013a1.htm>

Resources: Free Software

- ✓ Centers for Disease Control and Prevention's *Epi Info*:
<https://www.cdc.gov/epiinfo/index.html>

- ✓ Vanderbilt University's *REDCap*:
<https://projectredcap.org/software.php>



CREATE FORMS

Create surveys or questionnaires with field validation and skip logic.



ENTER DATA

Enter data, browse records, and search the database.



CREATE MAPS

Map data with coordinates, by choropleth, or dot density.



STATCALC

Statistical calculators for sample size, power, and more.

ANALYZE DATA



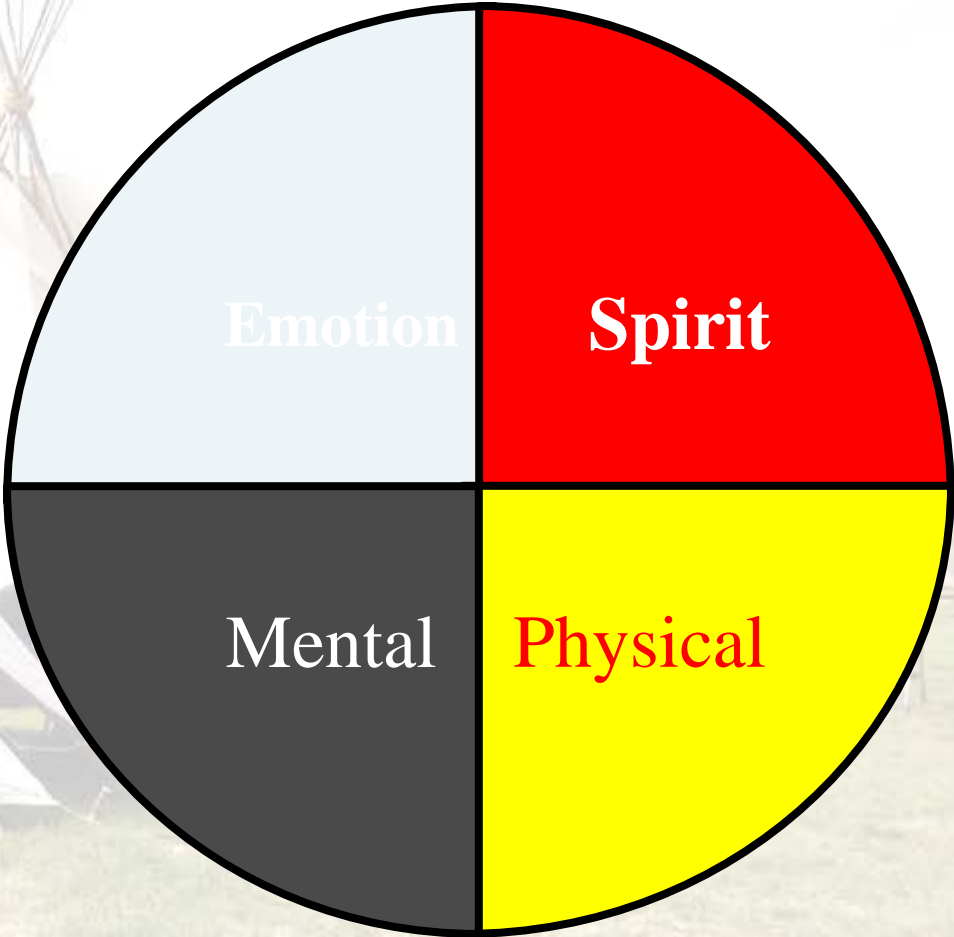
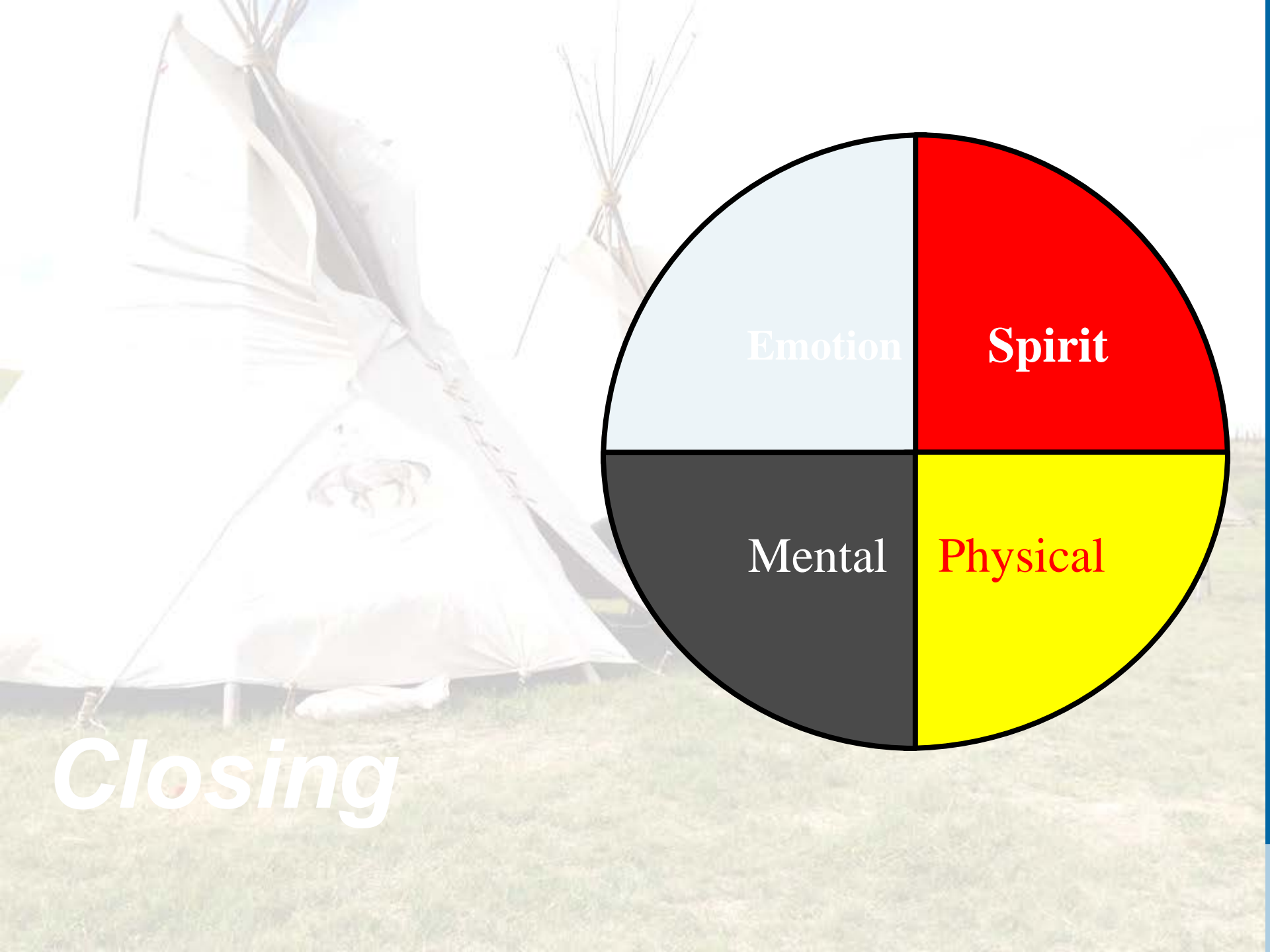
CLASSIC

Clean, transform, and analyze data with commands.



VISUAL DASHBOARD

Visualize analytical results with gadgets, charts, and tables.



Closing



“This is good, noble work that we’re doing. It’s easy to get discouraged... And I get there about once a week. But this is good work, and we need to tell our people that are working in the field...that their work matters.”

(Key Informant)