



Department of

Mental Health &

Substance Abuse Services

Shield of Care

Suicide Prevention Training for

Juvenile Justice Settings:

Results of Nationwide Evaluation

Disclaimer

The views, policies, and opinions expressed in written conference materials or publication and by speakers and moderators do not necessarily reflect the views, opinions, or policies of SAMHSA or HHS; nor does mention of trade names, commercial practices, or organizations imply endorsement by the U.S. Government.

Acknowledgements

The Tennessee Department of Mental Health (TDMHSAS) is the owner of this material developed as part of the Tennessee Lives Count Juvenile Justice and Tennessee Lives Count Connect projects funded from the Substance Abuse and Mental Health Services Administration (SAMHSA), U.S. Department of Health and Human Services (HHS). The views, policies, and opinions expressed are those of the authors and do not necessarily reflect those of SAMHSA or HHS. The Tennessee Department of Mental Health (TDMHSAS) is the recipient of this grant made possible through the Garrett Lee Smith Memorial Act of 2004. The TLC/JJ and TLC Connect projects are collaboratively implemented with Centerstone of Tennessee, Centerstone Research Institute, and Mental Health America of Middle Tennessee, and the Tennessee Suicide Prevention Network.



Shield of Care: Introduction



- As part of the Tennessee Lives Count Juvenile Justice Project, the Tennessee Department of Mental Health and Substance Abuse Services (TDMHSAS) collaborated closely with grant partners to develop and evaluate the Shield of Care™, a systems-based best-practice youth suicide prevention curriculum specifically for staff within juvenile justice facilities

Shield of Care Curriculum

- **Emphasis**
- **S-PLAN Model of Suicide Prevention**
- **Teaching Tools**



Development of the Shield of Care

**TN awarded
GLS grant:**
Tennessee Lives
Count –
Juvenile Justice

Objective:
Train all JJ staff
in EBP
gatekeeper
training, ASIST

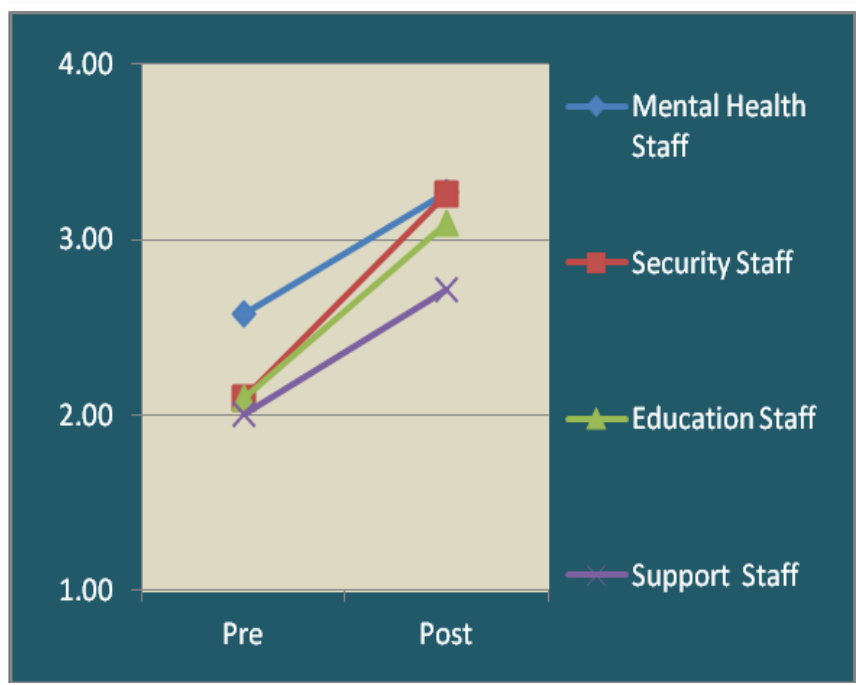
Evaluation:
Positive
outcomes;
need for
system fit

**Curriculum
Development:**
Partnered
effort to
develop SP
training
tailored for JJ

Pilot:
Training
delivery (N=50)
and evaluation

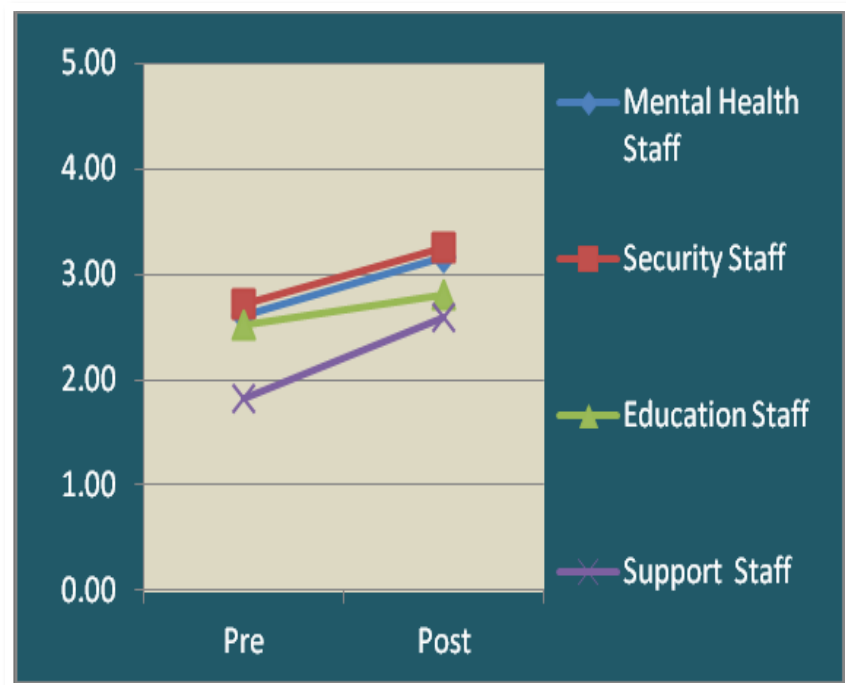
Shield of Care: Pilot Results

Perceived Knowledge of Suicide



$t(44) = -7.83, p < .000, \text{two-tailed}$

Perceived Suicide Intervention Skills

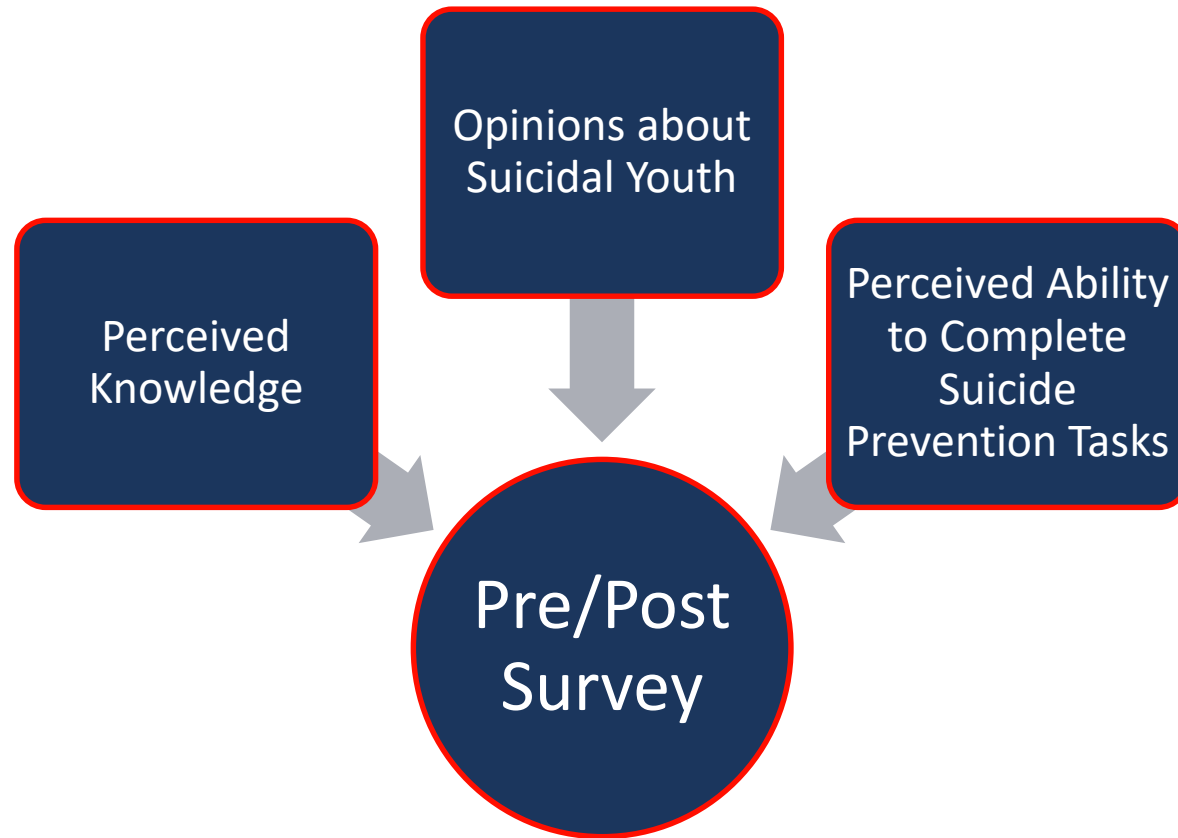


$t(44) = -3.54, p = .001, \text{two-tailed}$

Shield of Care: Nat'l Dissemination

- **Submission and acceptance of Shield of Care to Suicide Prevention Resource Center's (SPRC) Best Practice Registry**
- **Conclusion of TLC-JJ grant in 2012**
- **All Shield of Care training materials made available on TDMHSAS website**
- **Ongoing evaluation**

National Evaluation: Design



National Evaluation: Demographics

Gender			
		Frequency	Percent
Valid	Male	232	54.2
	Female	190	44.4
	Missing	6	1.4
Total		428	100.0

American Indian			
		Frequency	Percent
Valid	No	403	94.2
	Yes	19	4.4
	Total	422	98.6
Missing	System	6	1.4
Total		428	100.0

4_GKRace_WC			
		Frequency	Percent
Valid	No	184	43.0
	Yes	238	55.6
	Total	422	98.6
Missing	System	6	1.4
Total		428	100.0

African American			
		Frequency	Percent
Valid	No	262	61.2
	Yes	160	37.4
	Total	422	98.6
Missing	System	6	1.4
Total		428	100.0

Native Hawaiian			
		Frequency	Percent
Valid	No	421	98.4
	Yes	1	.2
	Total	422	98.6
Missing	System	6	1.4
Total		428	100.0

Hispanic/Latino			
		Frequency	Percent
Valid	No	407	95.1
	Yes	11	2.6
	Total	418	97.7
Missing	System	10	2.3
Total		428	100.0

National Evaluation: Descriptives

Descriptive Statistics					
	N	Minimum	Maximum	Mean	Std. Deviation
Knowledge: Pretest	428	.29	4.00	2.4098	.75052
Knowledge: Posttest	428	1.43	4.00	3.1665	.58242
Opinions: Pretest	428	1.00	3.56	2.2144	.44460
Opinions: Posttest	428	1.00	3.56	2.2870	.41063
Task Completion: Pretest	428	0.00	4.89	2.1395	.92514
Task Completion: Posttest	428	.67	5.00	3.1160	.89707

National Evaluation: Correlations

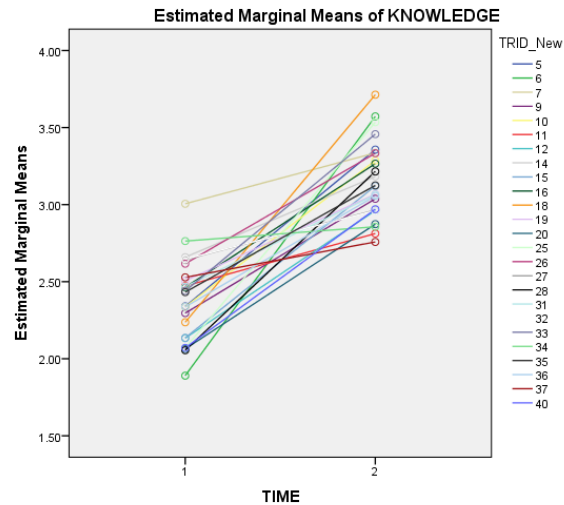
		Correlations					
		Knowledge Pre	Opinion Pre	Tasks Pre	Knowledge Post	Opinion Post	Tasks Post
Knowledge - Pretest	Pearson Correlation	1	.137**	.652**	.382**	.064	.341**
	Sig. (2-tailed)		.005	.000	.000	.184	.000
	N	428	428	428	428	428	428
Opinions - Pretest	Pearson Correlation	.137**	1	.050	-.159**	.546**	-.163**
	Sig. (2-tailed)	.005		.301	.001	.000	.001
	N	428	428	428	428	428	428
Task Completion - Pretest	Pearson Correlation	.652**	.050	1	.400**	.042	.574**
	Sig. (2-tailed)	.000	.301		.000	.388	.000
	N	428	428	428	428	428	428
Knowledge Post	Pearson Correlation	.382**	-.159**	.400**	1	-.090	.715**
	Sig. (2-tailed)	.000	.001	.000		.062	.000
	N	428	428	428	428	428	428
Opinion Post	Pearson Correlation	.064	.546**	.042	-.090	1	-.091
	Sig. (2-tailed)	.184	.000	.388	.062		.059
	N	428	428	428	428	428	428
Tasks Post	Pearson Correlation	.341**	-.163**	.574**	.715**	-.091	1
	Sig. (2-tailed)	.000	.001	.000	.000	.059	
	N	428	428	428	428	428	428

** . Correlation is significant at the 0.01 level (2-tailed).

* . Correlation is significant at the 0.05 level (2-tailed).

National Evaluation: Knowledge

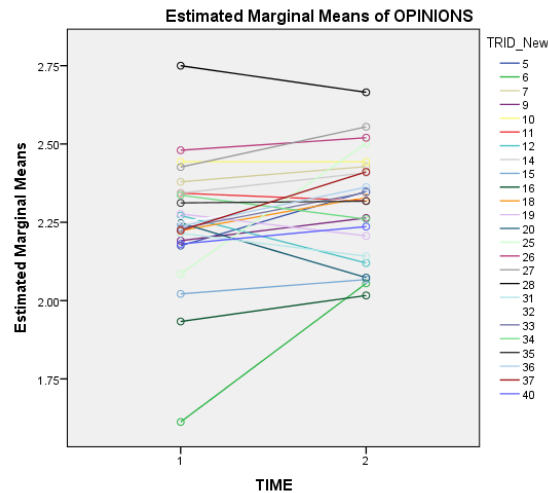
Tests of Within-Subjects Contrasts							
Measure:	KNOWLEDGE						
Source		Type III Sum of Squares	df	Mean Square	F	Sig.	Partial Eta Squared
TIME	Linear	58.751	1	58.751	227.329	.000	.361
TIME * TRID_New	Linear	17.315	24	.721	2.792	.000	.143
Error(TIME)	Linear	104.152	403	.258			



National Evaluation: Opinions

Tests of Within-Subjects Contrasts

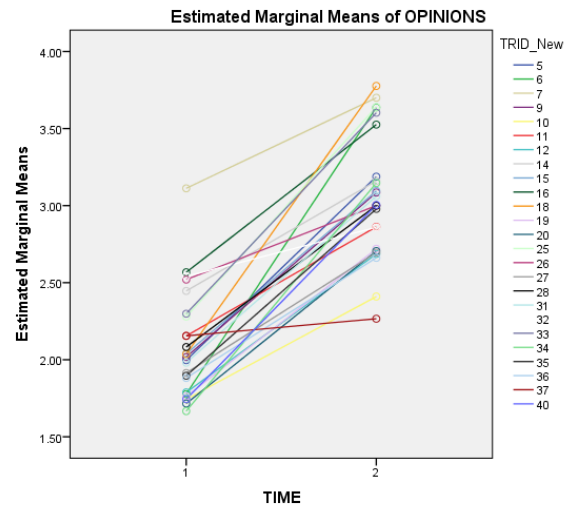
Measure:	OPINIONS						
Source		Type III Sum of Squares	df	Mean Square	F	Sig.	Partial Eta Squared
TIME	Linear	.373	1	.373	4.487	.035	.011
TIME * TRID_New	Linear	2.139	24	.089	1.073	.372	.060
Error(TIME)	Linear	33.492	403	.083			



National Evaluation: Tasks

Tests of Within-Subjects Contrasts

Measure:	OPINIONS						
Source		Type III Sum of Squares	df	Mean Square	F	Sig.	Partial Eta Squared
TIME	Linear	93.722	1	93.722	285.961	.000	.415
TIME * TRID_New	Linear	19.133	24	.797	2.432	.000	.127
Error(TIME)	Linear	132.080	403	.328			



Contact Information

Bre P. Banks, Ph.D.

Manager, Clinical Education & Dissemination Research

Research & Evaluation Division

Centerstone Research Institute

44 Vantage Way, Suite 280 | Nashville, TN 37228

Office: (615) 463-6650 | Mobile: (615) 934-4921

Email: Bre.Banks@Centerstone.org

TN

Department of
**Mental Health &
Substance Abuse Services**