

Advancing Suicide Prevention through Collaborative Partnerships

Garrett Lee Smith Grantee
Conference
March 2018

Christy Malik, MSW
Senior Policy Associate
National Association of State Mental Health
Program Directors (NASMHPD)



Disclaimer: The views, policies, and opinions expressed in written conference materials or publication and by speakers and moderators do not necessarily reflect the views, opinions, or policies of SAMHSA or HHS; nor does mention of trade names, commercial practices, or organizations imply endorsement by the U.S. Government.

Objectives

- NASMHPD overview
- Trends in behavioral health
- Continuum of care
- Lifeline communication report
- Collaborative partnerships



NASMHPD

Represents the \$41 Billion Public Mental Health System serving 7.5 million people annually in all 50 states, 4 territories, and the District of Columbia.

Affiliated with the approximately 195 State Psychiatric Hospitals: Serving 147,000 people per year and 41,800 people at any one point in time.

MISSION

NASMHPD will work with states, federal partners, and **stakeholders to promote wellness, recovery, and resiliency for individuals with mental health conditions or co-occurring mental health and substance related disorders across all ages and cultural groups**, including: youth, older persons, veterans and their families, and people under the jurisdiction of the court across the full continuum of services including inpatient.

NASMHPD Research Institute (NRI)

- NRI collects and analyzes data related to federal reporting requirements for the Mental Health Block Grant Program, as well as collection and reporting activities related to state psychiatric hospitals.
- NRI maintains a data base on financing, quality management and information systems.
- NRI conducts specialty state study analyses.
- For additional information contact [Ted Lutterman](#) (703-738-8164)

Individuals Served by State Mental Health Authority

- SMHAs provided mental health services to over 7.5 million individuals during FY 2015
 - 2.3% of the US Population
 - 68% of Adults served had a Serious Mental Illness (SMI)
 - 70% of Children served had a Serious Emotional Disturbance

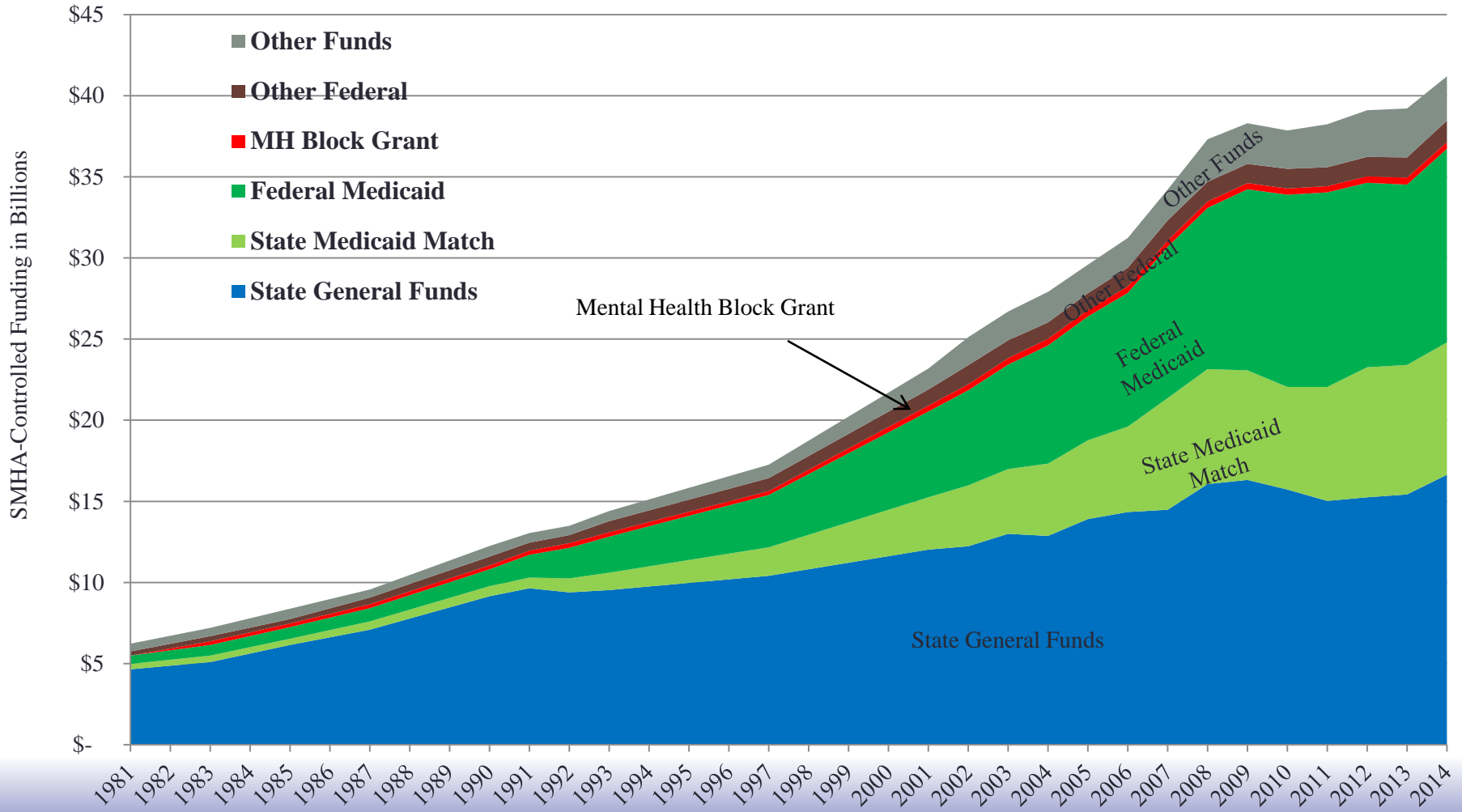
Percent of Clients Served, by Service Setting: 2014 Uniform Reporting System

- ❖ 98% of clients received community-based mental health services
 - 22.3 per 1,000 population (range from 0.8 to 51.2 per 1,000)
- ❖ 2% of clients received services in state psychiatric hospitals
 - Range from less than 1% of clients (in 11 states) to 12% in (2 states) of total clients served
- ❖ 4.6% of clients received services in other psychiatric inpatient settings (37 states reporting on OPI)



SMHA-Controlled Revenues for Mental Health Services: FY 1981 to FY 2014

Analytics Improving Behavioral HealthSM

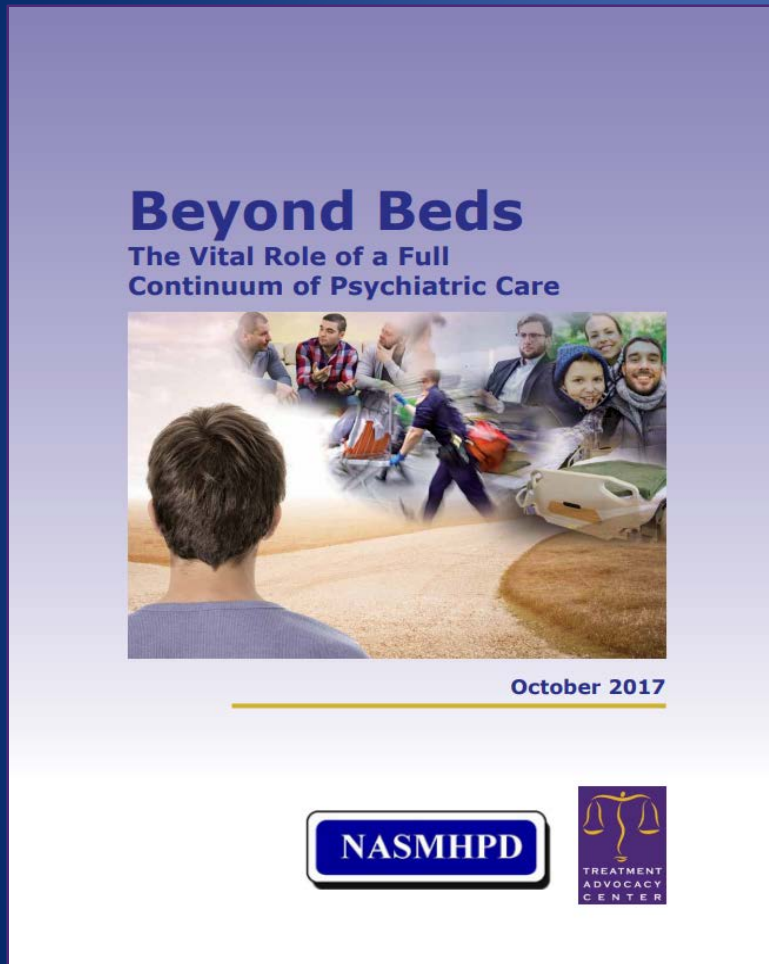


NASMHPD Technical Assistance Coalition 2017 Papers

| | |
|----|--|
| 1 | Beyond Beds: The Vital Role of a Full Continuum of Psychiatric Care |
| 2 | The Role of Permanent Supportive Housing in Determining Psychiatric Inpatient Bed Capacity |
| 3 | The Vital Role of Specialized Approaches: Persons with Intellectual and Developmental Disabilities in the Mental Health System |
| 4 | Crisis Services' Role in Reducing Avoidable Hospitalization |
| 5 | Quantitative Benefits of Trauma-Informed Care |
| 6 | Older Adults Peer Support: Finding a Source for Funding |
| 7 | The Role State Mental Health Authorities Can Play in Delivery of Integrated Primary and Behavioral Health Care for People with Serious Mental Illness, including those with Co-Occurring Substance Use Disorders |
| 8 | Cultural and Linguistic Competence as a Strategy to Address Health Disparities |
| 9 | Forensic Patients in State Psychiatric Hospitals: 1999-2016 |
| 10 | Trend in Psychiatric Inpatient Capacity, United States and Each State, 1970 to 2014 |

2017 papers and previous years are at the following link:
<https://www.nasmhpd.org/content/tac-assessment-papers>

Beyond Beds

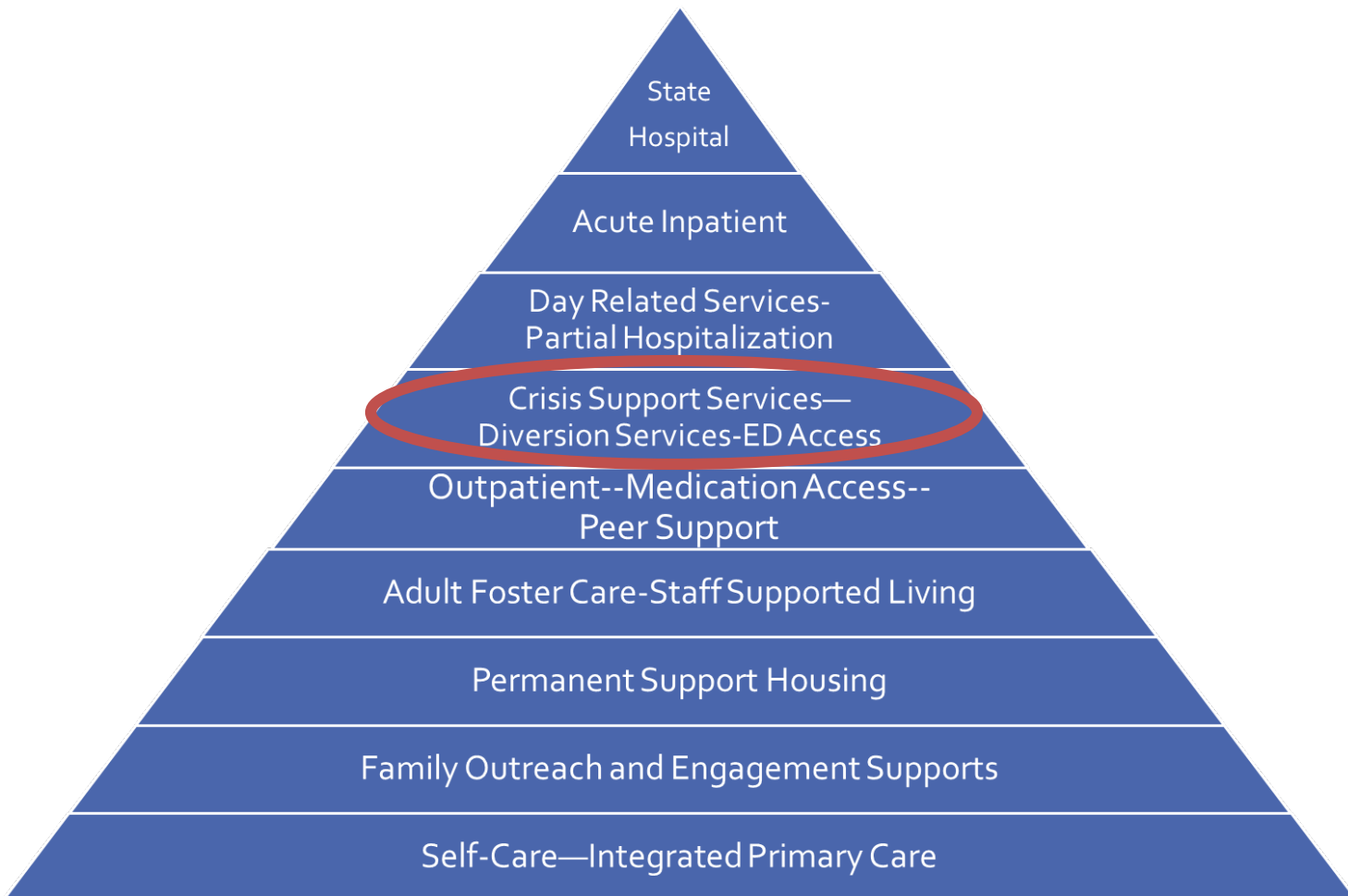


- **Recommendation #1:** The Vital Continuum—Prioritize & fund the development of a comprehensive continuum of mental health care that incorporates a full spectrum of integrated, complementary services known to improve outcomes for individuals of all ages with serious mental illness.

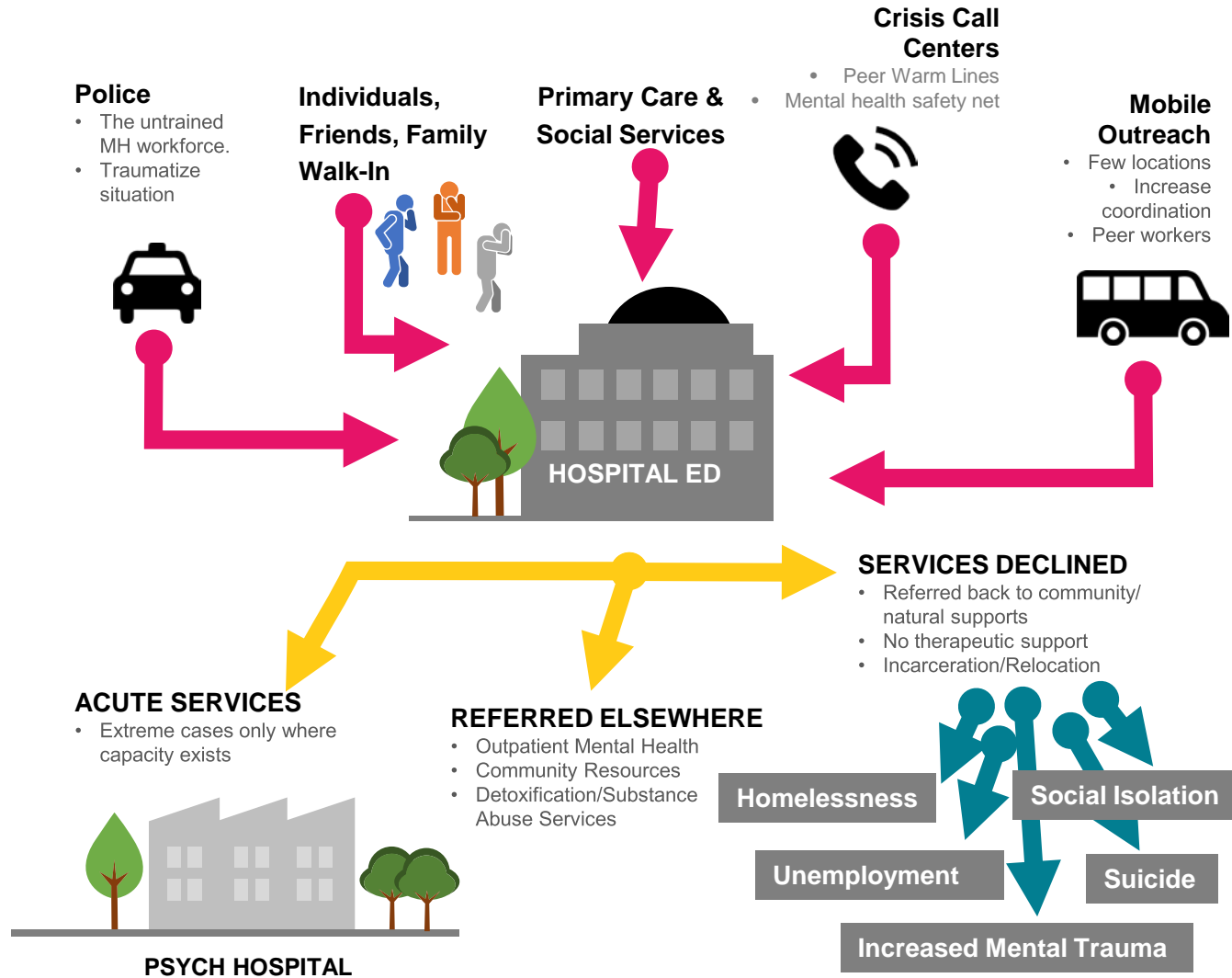
NASMHPD Papers can be viewed at:

<https://www.nasmhpd.org/content/tac-assessment-papers>

U.S. Mental Health Needs across a Continuum



Core Community Crisis Flow



Lifeline Commissioner Reports

- State/territory customized bi-annual reports detailing call volume trends, statewide Lifeline members, and benefits to joining the network.



Lifeline Commissioner Reports

- Promotes engagement and information sharing between Lifeline and SMHA
 - communication and awareness
 - collaboration between departments and agencies
 - statewide advocacy
- Positive effect at the state level
 - state examples

Strategies for Partnership

- Establishing and sustaining relationships
 - Stay on the radar
 - SMHA, Public Health, Children/Family Services, Hospital Associations
 - Advocacy groups (AFSP, MHA, NAMI)
- Developing policy/legislative recommendations that promote the full continuum of crisis services care
- Securing funding
 - Braided/collaborative
 - Federal grants
 - Peer workforce

Thank you!

Christy Malik

christy.malik@nasmhpd.org

703-682-5184